

## INSTRUCTIONS TO MANAGE YOUR EARLI SIG2 CONFERENCE REGISTRATION

1. Register for the conference and optional products (conference dinner ticket and workshops), via the [registration platform](#). After that you will be able to manage your registration via the ADEIT platform.
2. From the registration platform you can access to your profile:

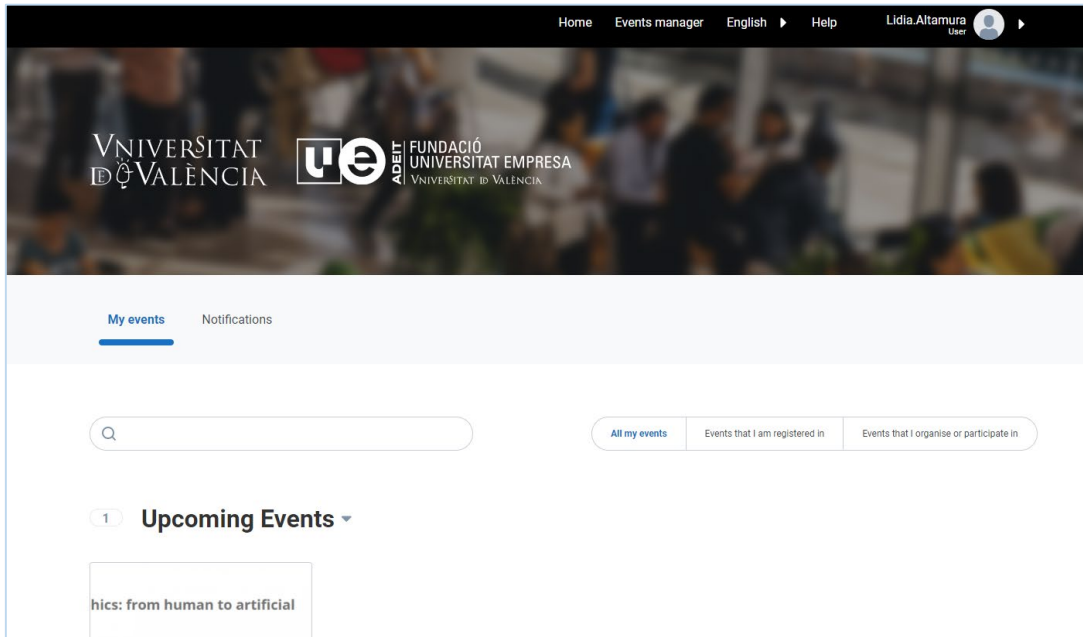
The screenshot shows the EARLI SIG2 conference registration platform. The 'LOGIN' button is highlighted with an orange box. An orange arrow points from the 'LOGIN' button to the 'ACCESS' modal. The modal has two sections: 'UNIVERSITIES: WITH YOUR UNIVERSITY ACCOUNT' with a 'Start identification' button, and 'EXTERNAL USERS' with 'Email' and 'Password' input fields and a 'Sign in' button. An orange arrow points to the 'EXTERNAL USERS' section.

Type of member	Early fee	Late fee
JURE members & PhD students	195 €	235 €
EARLI members	245 €	295 €

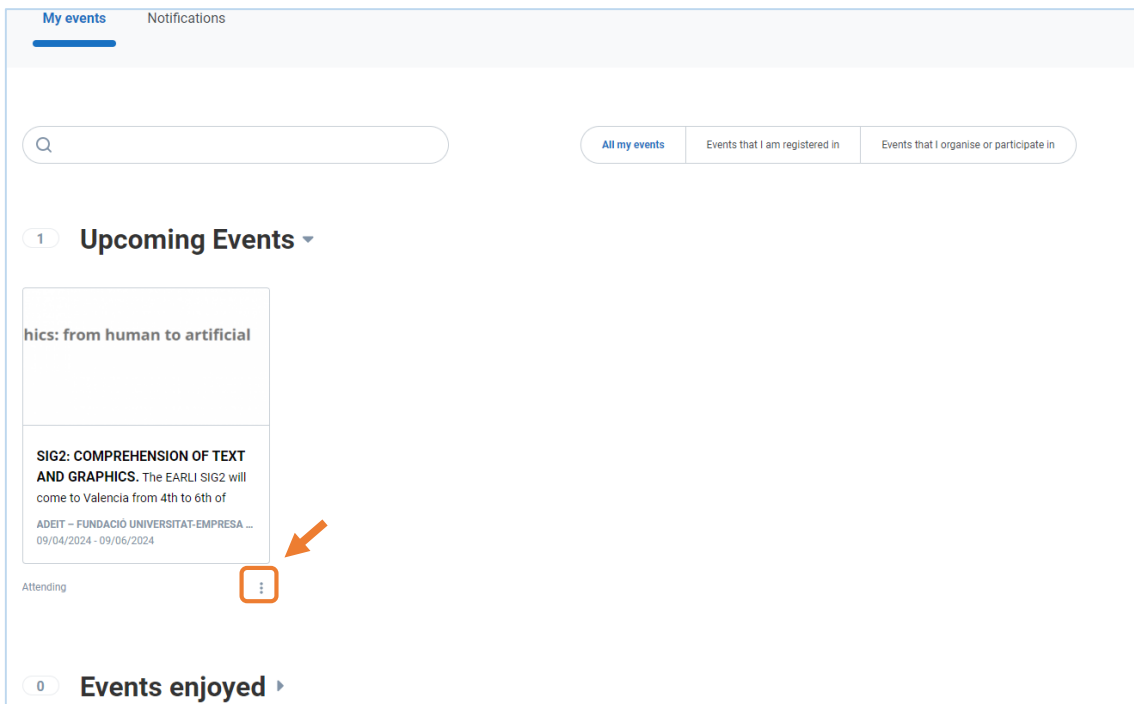
You will need to access using the same email you have indicated in the registration and payment process, otherwise the system will not recognize your account.

To finish the account set up click on “Forgot your password?”. You will receive an email to set up a password.

- Once you have configured your password you can access to your personal account. You will be redirected to this page:

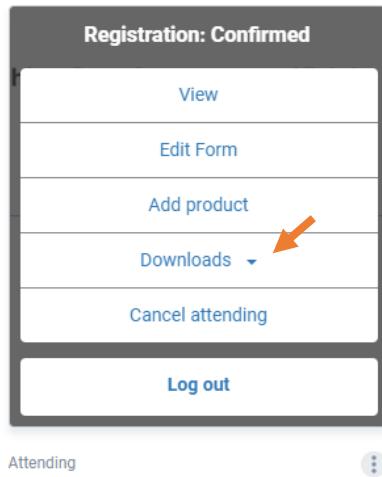


- You will see the Upcoming Events. Click on the 3 dots of the EARLI SIG2 Conference:

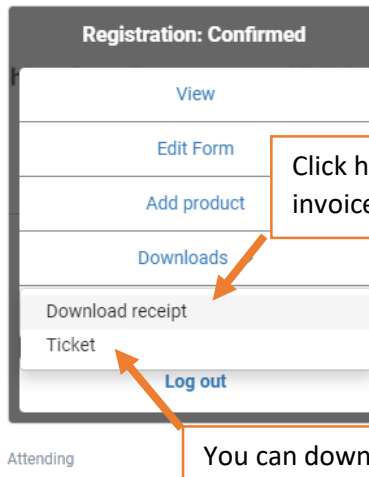


5. Download the invoice or other required documents. Please note that the invoice will be available in 2-3 working days after the payment has been verified.

## 1 Upcoming Events ▾



## 1 Upcoming Events ▾



Click here to download the invoice.

You can download again the Ticket if needed. Remember you will need this document to access the events.